

DL420A

CONTENTS	PAGE
1. GENERAL SPECIFICATION	2
2. ENGINE SYSTEM	3
3. HYDRAULIC SYSTEM	5
4. DRIVE MECHANISM	8
5. HYDRAULIC CYLINDERS	13
6. FRONT	14
7. DIMENSIONS AND WORKING RANGE	16
8. PERFORMANCE DATA	20
9. NOISE LEVEL	21
10. USER SERVICE DATA	21
11. SUB GROUP WEIGHTS	22
12. LIFTING CAPACITY	22

MODEL

DL420A

1/22

1. GENERAL SPECIFICATION

ITEMS		UNIT	STD	OPT
OPERATING WEIGHT		kg	21,955	22,060
ENGINE (SAE J1995 Gross) (SAE J1349 Net)	RATED POWER (Gross)	kW/rpm	210/2,100	
	RATED POWER (Net)	kW/rpm	210/2,100	
	MAX. TORQUE (Gross)	N.m/rpm	1,275/1,200	
SYSTEM PRESSURE (WORK/STEER)		bar	200/185	
TRAVEL SPEED	FORWARD (1/2/3/4)	km/h	8.3/13.6/29/40	
	REVERSE (1/2/3)	km/h	8.3/13.6/29	
FRONT SPEED (RAISE/DUMP/LOWER)		sec	6.0/1.3/4.2	
GRADEABILITY		%(°)	58(30)	
TIRE SIZE		-	26.5x25-20PR	
WORKING RANGE	BUCKET CAPACITY (SAE HEAPED)	m³	3.9 BOT	4.1 BOC
	DUMP HEIGHT AT 45°	mm	2,960	3,085
	DUMP REACH AT 45°	mm	1,425	1,285
	MAX. DUMP ANGLE (fully raised)	deg	45	←
	MAX. TILT ANGLE (on ground)	deg	43	←
	MAX. TILT ANGLE (fully raised)	deg	55	←
	MAX. TILT ANGLE (at carry)	deg	47	←
	BUCKET HINGE HEIGHT	mm	4,295	←
	DIGGING DEPTH (0° level)	mm	105	←
TRAVEL DIMENSION	OVERALL LENGTH	mm	8,890	8,700
	OVERALL WIDTH (bucket)	mm	3,200	←
	OVERALL HEIGHT	mm	3,535	←
	GROUND CLEARANCE	mm	510	←
	WHEEL BASE	mm	3,500	←
	TREAD	mm	2,300	←
BREAKOUT FORCE		kN	197	196
RATED OPERATING LOAD		kg	7,745	7,468
MAX. STEERING ANGLE		deg	40	
TURNING RADIUS (Tire edge/ Count weight edge)		mm	6,380/6,395	
SOUND LEVEL in CAB (ISO 6396)		dB(A)	74	
EXTERNAL SOUND LEVEL(ISO6395, 2000/14/EC)		dB(A)	112	
FUEL TANK CAPACITY		Liter	348	
Every dimensions, weights, and performance data based on SAE J732C and SAE742B. ROPS/FOPS Cabin is Standard. STD = 3.9 BOT, OPT = 4.1 BOC				

MODEL

DL420A

2/22

2. ENGINE SYSTEM

2.1) ENGINE

EMISSION	TIER-2
MAKER & MODEL	DOOSAN, DE12TIS
RATED POWER	210kw / 2,100 RPM
MAX. TORQUE	1,275 N.m / 1,200 RPM
FUEL CONSUMPTION	160 g/ps.hr @ RATED SPEED
TYPE	CHARGED AIR COOLED, TURBO INTERCOOLER, DIRECT INJECTION
DISPLACEMENT	11,051 cc
No. OF CYLINDER	6
BORE DIA. & STROKE	Φ123 x 155 mm
HIGH IDLE SPEED	2,300 ± 50 rpm
LOW IDLE SPEED	975 ± 25 rpm
STARTING MOTOR	24 V x 6.6 Kw

2.2) ALTERNATOR

VOLTAGE : **24 V**
 RATING AMPERES : **60 A**

2.3) BATTERY

SYSTEM VOLTAGE : **24 V**
 QUANTITY : **12 V x 2**
 CAPACITY (AMP) : **150 AH**

2.4) AIR CLEANER

TYPE : **DRY, DOUBLE ELEMENT**
 FILTRATION AREA : **14.7 m²**
 SIZE (DIA. X LENGTH) : **Φ 183 mm x 530 mm**

2.5) PRE CLEANER

AIR RESTRICTION RATE : **2.9 inch H₂O at 758 C.F.M**
 AIR CONTAMINANTS : **84% (A.C COARSE DUST)**

2.6) FAN (Driven by hydraulic motor)

TYPE : **SUCKER, 8 BLADE, PLASTIC**
 SIZE : **Φ 914 mm (36 inch)**
 MAX RPM : **1,600 RPM**

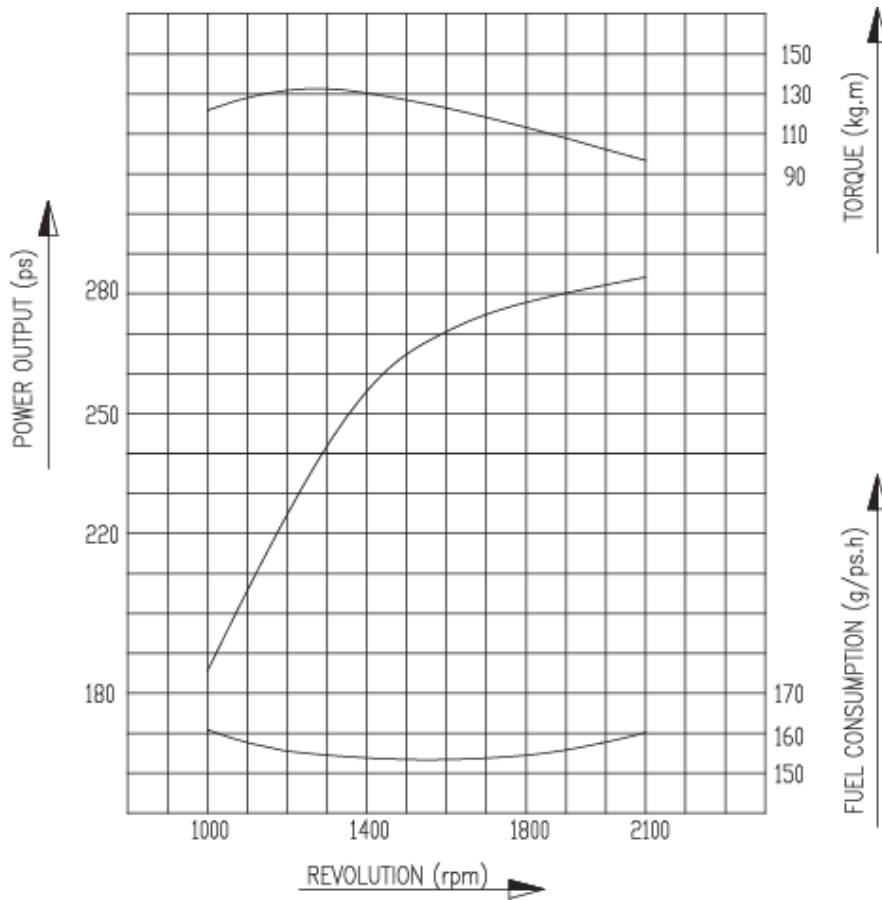
MODEL

DL420A

3/22

2.7) ENGINE PERFORMANCE CURVE

CONDITION	SPECIFICATION
ATMOSPHERIC PRESSURE	760 mmHg (20 °C)
WARMING UP	SUFFICIENT
COOLING FAN	NOT INSTALLED
ALTERNATOR	NOT INSTALLED
AIR CLEANER	INSTALLED
MUFFLER	INSTALLED



PERFORMANCE CONDITION	KS-R1004
POWER (MAX, RATED)	210 kw / 2,100 rpm
MAX. TORQUE	1,275 N.m / 1,200 rpm
FUEL CONSUMPTION (MAX, RATED)	160 g/ps.h

MODEL	DL420A		4/22
-------	---------------	--	-------------

3. HYDRAULIC SYSTEM

3.1) MAIN PUMP

TYPE : **FIXED VANE PUMP**
DISPLACEMENT : **111 (cc/rev)**
MAX. FLOW RATE : **240 l/min**
TANK PRESSURIZING DEVICE : **SEMI PRESSURISED (AIR BREATHER)**

3.2) MAIN CONTROL VALVE

TYPE : **PILOT CONTROL w/ FLOAT**
SPOOL ARRANGEMENT : **AUX. - LOADER ARM - BUCKET**
RELIEF VALVE PRESSURE : **200 bar**
OVERLOAD RELIEF PRESSURE : **250 bar**

3.3) REMOTE CONTROL VALVE (STANDARD)

TYPE : **PILOT OPERATED SINGLE JOYSTICK (Mono Lever)**
PRESSURE/ : **20.5 bar AT FULL CONTROLLED STROKE**
STROKE CHARACTER : **28 bar AT DETENT**

3.4) REMOTE CONTROL VALVE (OPTION-1)

TYPE : **PILOT OPERATED JOYSTICK**
WITH 3rd LEVER VALVE, FNR (Walvoil Lever)
PRESSURE / : **21.0 bar AT 7.5 mm .**
STROKE CHARACTER : **28 bar AT DETENT**

3.5) REMOTE CONTROL VALVE (OPTION-2)

TYPE : **PILOT OPERATED FINGER TIP**
LEVER (2 or 3 LEVER) WITH FNR SWITCH
PRESSURE / : **21.0 bar AT 7.5 mm .**
STROKE CHARACTER : **28 bar AT DETENT**

3.6) BRAKE & PILOT & FAN MOTOR SUPPLY VALVE

BRAKE CHARGING : **120 bar**
PILOT REDUCING PRESSURE : **28 bar**
SOLENOID VALVE Q'TY : **PILOT CUT-OFF-1, PARKING -1**
SOLENOID VOLTAGE : **DC 24V**

3.7) UNLOADING VALVE

MAX. RATED PRESSURE : **210 bar**
UNLOADING PRESSUR : **160+5 bar at 25 l/min**

3.8) HYDRAULIC FAN MOTOR

TYPE : **GEAR MOTOR WITH RELIEF &**
MAKE UP CHECK VALVE
DISPLACEMENT : **31 cc/rev**
RELIEF PRESSURE : **182 bar**
COOLING FAN RPM : **1,600 RPM**

MODEL

DL420A

5/22

3.9) AIR BREATHER

RELIEF PRESSURE : **0.5 bar**
VACUUM RELIEF : **0.04 ~ 0.05 bar**

3.10) ACCUMULATOR ; BRAKE

CHARGE PRESSURE, VOLUME : **30 bar, 0.75 L**
TYPE : **BLADDER**
(50cc OIL IS FILLED WITH NITROGEN GAS)

3.11) ACCUMULATOR ; PILOT

CHARGE PRESSURE, VOLUME : **15 bar, 0.32 L**
TYPE : **BLADDER**
(50cc OIL IS FILLED WITH NITROGEN GAS)

3.12) ACCUMULATOR ; STEERING

CHARGE PRESSURE, VOLUME : **35 bar, 0.32 L**
TYPE : **BLADDER**
(50cc OIL IS FILLED WITH NITROGEN GAS)

3.13) ACCUMULATOR ; LIS (OPTION)

CHARGE PRESSURE, VOLUME : **20 bar, 6 L**
TYPE : **BLADDER, NITROGEN CHARGE PRESSURE**

3.14) FILTERS

RETURN : **GLASS FIBER, 10 μ**
PILOT & BRAKE : **GLASS FIBER, 20 μ**
SUCTION : **PAPER ELEMENT, 177 μ**

3.15) DC MOTOR-PUMP ; EMERGENCY STEER (OPTION)

3.15.1) PUMP

TYPE : **GEAR, BUILT IN CHECK AND RELIEF V/V**
THEORETICAL DISPLACEMENT : **16 cc/rev**
RELIEF PRESSURE : **62 bar**
ALLOWABLE SPEED : **3,500 rev/min**

3.15.2) ELECTRIC MOTOR

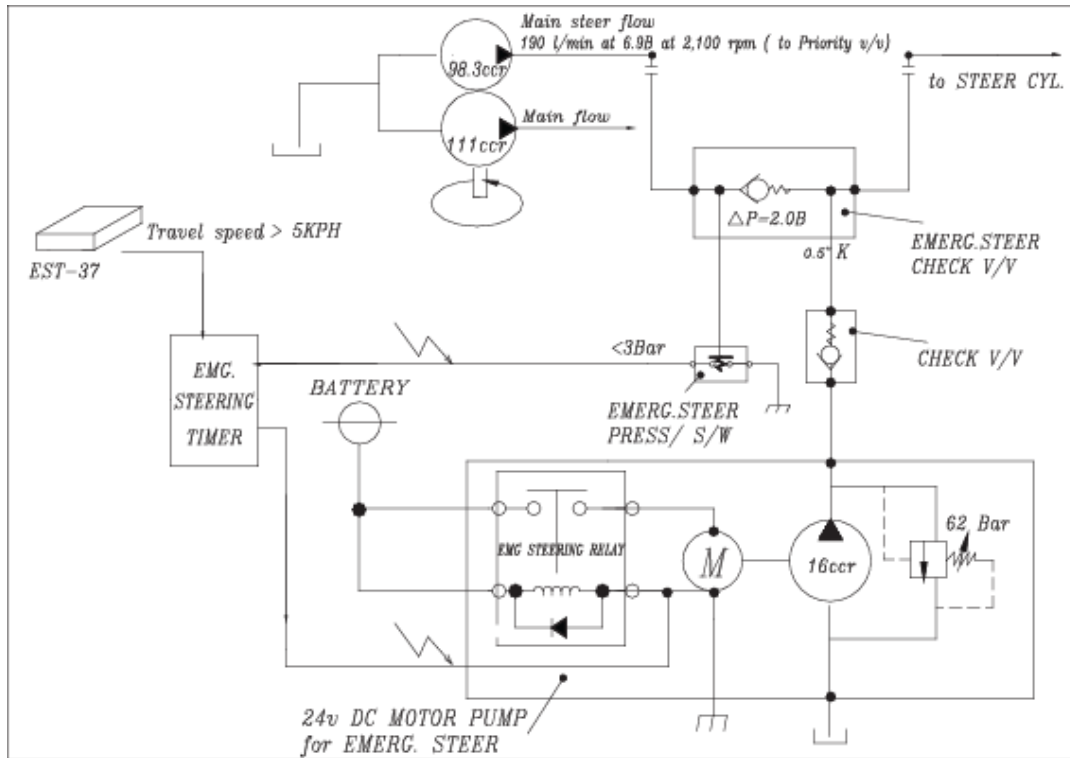
TYPE : **24V DC, DOUBLE TERMINAL, WATER SEALED,
MEDIUM DUTY w/ FOOT MOUNTING BRACKET
BUILT IN STARTER SWITCH**

MODEL

DL420A

6/22

3.15.3) EMERGENCY STEER CIRCUIT



MODEL

DL420A

7/22

4. DRIVE MECHANISM

4.1) TRAVELLING SYSTEM

4.1.1) TRANSMISSION

TYPE	:	4 SPEED, FULL AUTO POWER-SHIFT, COUNTERSHAFT, ENGINE MOUNTED w/ FLEXIBLE PLATE
TORQUE CONVERTER STALL RATIO	:	2.985
TORQUE CONVERTER SIZE	:	370 mm
CHARGING PUMP FLOW	:	135 l/min at 2000 rpm
HYDRAULIC PUMP P.T.O RATIO	:	1.0
POWER SHIFT CONTROL PRESSURE	:	16~18 bar
CONVERTER SAFETY RELIEF PRESSURE	:	11 bar
CONVERTER OUTPUT LIMIT TORQUE	:	255 kg.m
MAX. ROTATING SPEED	:	2,300 rpm
SHIFT CONTROL	:	ELECTRIC SHIFT WITH PROPORTIONAL VALVE, SOLENOID VALVES (DC 24 V)
CONTROL UNIT	:	EST - 37
OUTPUT FLANGE	:	FRONT - 8.5C MECHANICS REAR - 7C MECHANICS
CONTROL CIRCUIT (NEXT PAGE)		

4.1.2) PROPELLER SHAFT

	FRONT	ARTIC	REAR
MAX. ALLOWABLE TORQUE	1,105 Kg.m	1,105 Kg.m	884 Kg.m
MIN. JOINT ANGLE	23°/23°	23°/23°	23°/23°
MAX. PHASE MISALIGNMENT	±1°	±1°	±1°
MAX. SPEED	7,000 rpm	7,000 rpm	7,000 rpm
COUPLING DIMENSION	8.5C	8.5C	7C

MODEL

DL420A

8/22

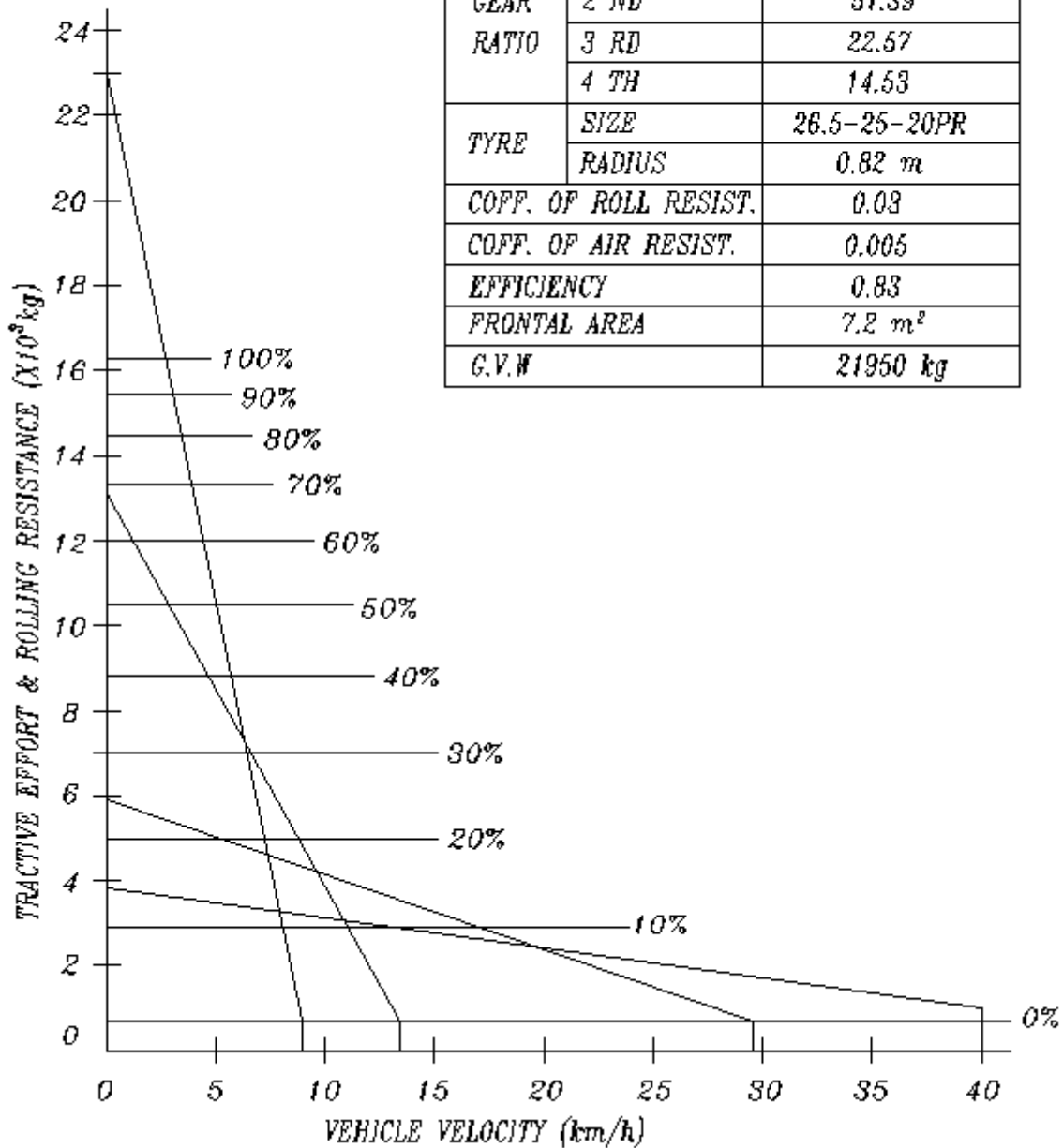
4.1.3) FRONT AXLE		
TYPE	:	FULLY FLOATING PLANETARY-TYPE HUB DRIVE FIXED MOUNTING
OVERALL REDUCTION RATIO	:	23.334
AXLE LOAD (EMPTY)	:	10,000 kg
AXLE LOAD (BREAKOUT)	:	34,000 kg
WHEEL BOLT P.C.D	:	Φ425 mm
BRAKE TYPE	:	WET DISC
BRAKE TORQUE per WHEEL	:	3,998 kg.m at 80 bar
DRIVE FLANGE	:	8.5C MECHANICS
4.1.4) REAR AXLE		
TYPE	:	FULLY FLOATING PLANETARY-TYPE HUB DRIVE TRUNNION MOUNTING
OVERALL REDUCTION RATIO	:	23.334
AXLE LOAD (EMPTY)	:	10,000 kg
AXLE LOAD (CROWD)	:	14,500 kg
WHEEL BOLT P.C.D	:	Φ425 mm
BRAKE TYPE	:	WET DISC
BRAKE TORQUE per WHEEL	:	3,330 kg.m at 80 bar
DRIVE FLANGE	:	7C MECHANICS
4.1.5) RIM		
TYPE	:	INDIA, TUBLESS, SINGLE
RIM SPEC.	:	22.0 x 25
DISC OFFSET	:	7.0 mm
4.1.6) TRAVELLING PERFORMANCE (REFER TO NEXT PAGE)		
MAX. SPEED	:	40.0 KPH
MAX. TRACTIVE EFFORT	:	21.5 TON
GRADEABILITY	:	30° (58%)

MODEL

DL420A

9/22

E/G	MAX. POWER	285 ps/2100rpm
	MAX. TORQUE	130Kg _m /1200rpm
GEAR RATIO	1 ST	86.90
	2 ND	51.39
	3 RD	22.57
	4 TH	14.53
TYRE	SIZE	26.5-25-20PR
	RADIUS	0.82 m
COFF. OF ROLL RESIST.		0.03
COFF. OF AIR RESIST.		0.005
EFFICIENCY		0.83
FRONTAL AREA		7.2 m ²
G.V.W		21950 kg

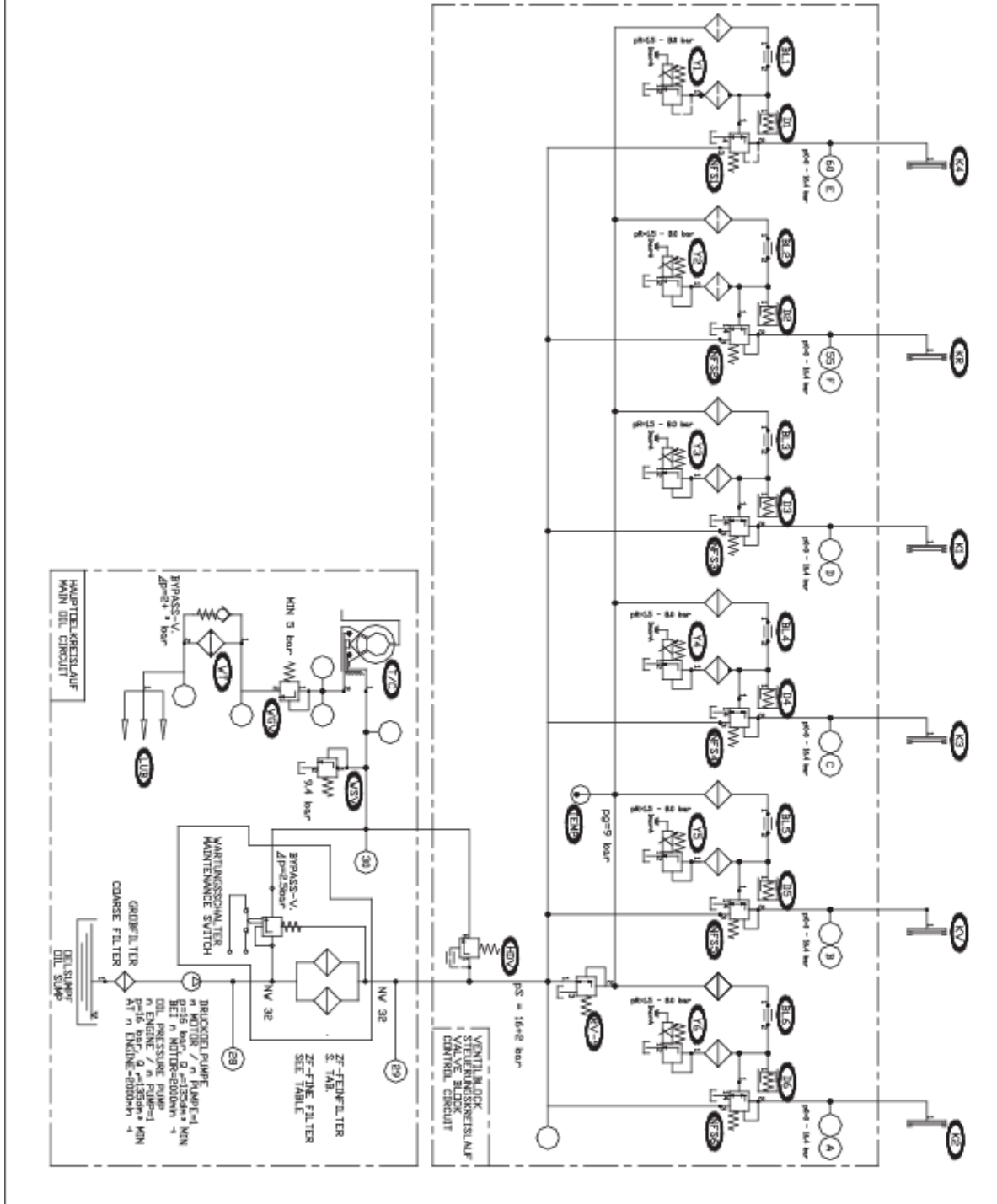


MODEL

DL420A

10/22

* TRANSMISSION HYDRAULIC CIRCUIT DIAGRAM



MODEL

DL420A

11/22

4.2) BRAKE SYSTEM

4.2.1) BRAKE & FAN PUMP

TYPE : **FIXED VANE PUMP**
DISPLACEMENT : **31.8 cc/rev**
MAX. SUPPLY FLOW : **67 l/min**

4.2.2) SERVICE BRAKE VALVE (DUAL)

BRAKE PRESSURE : **80 bar**
PEDAL FORCE : **21.0 kg at 80 bar, 175 mm RAD.**

4.2.3) PARKING BRAKE

TYPE : **SPRING-APPLIED SLIDING CALIPER
DISC BRAKE**
RELEASE PRESSURE : **88.69 bar**
REQUIRED STAT. BRAKE : **497 kg.m at a slope of 50% TORQUE LADEN**
REQUIED DYN. BRAKE TORQUE : **145 kg.m at laden (avail. 444 kg.m)**
AT AN EMERGENCY STOP OF
1.50 m/ cm²

4.2.4) SYSTEM & PRESSURE

SYSTEM : **FULL HYDRAULIC, SEPARATE DUAL LINE**
SERVICE BRAKE PRESSURE : **80 bar**
PARKING BRKAE RELEASE : **120 bar**
BRAKE CHARGE PRESSURE : **120 bar**
BRAKE DISTANCE : **13.8 m at 42 KPH**

4.3) STEERING SYSTEM

4.3.1) STEERING PUMP

TYPE : **FIXED VANE PUMP**
DISPLACEMENT : **98.3 cc/rev**
CONSTANT FLOW : **194 l/min**
RELIEF VALVE SET PRESSURE : **185 bar**

4.3.2) STEERING UNIT

TYPE : **LOAD SENSING, NON REACTION**
DISPLACEMENT : **200 cc/rev**

4.3.3) FLOW AMPLIFIER

TYPE : **CONTAINS A DIRECTIONAL VALVE,
AN AMPLIFICATION STAGE, A PRIORITY
VALVE, A PILOT PRESSURE RELIEF VALVE
AND SHOCK AND SUCTION VALVE**
AMPLIFICATION FACTOR : **8 (= 200 x 8 = 1600 cc/rev)**
CONTROL PRESSURE : **10.5 bar**
LS RELIEF VALVE SETTING : **185±5 bar**
PRIORITY FLOW : **125 l/min (at 80 Wheel RPM)**

MODEL

DL420A

12/22

4.3.4) DUAL CROSS RELIEF VALVE

RELIEF VALVE PRESSURE : **20 bar**

4.3.5) STEERING CYLINDER

BORE x DIA x STROKE : **100 x 50 x 450 mm**

CUSHION STROKE : **38 mm**

5. HYDRAULIC CYLINDERS

	LIFT	BUCKET	STEER
QUANTITY	2	1	2
BORE (mm)	180	200	100
ROD DIA. (mm)	95	105	50
STROKE (mm)	928	600	450

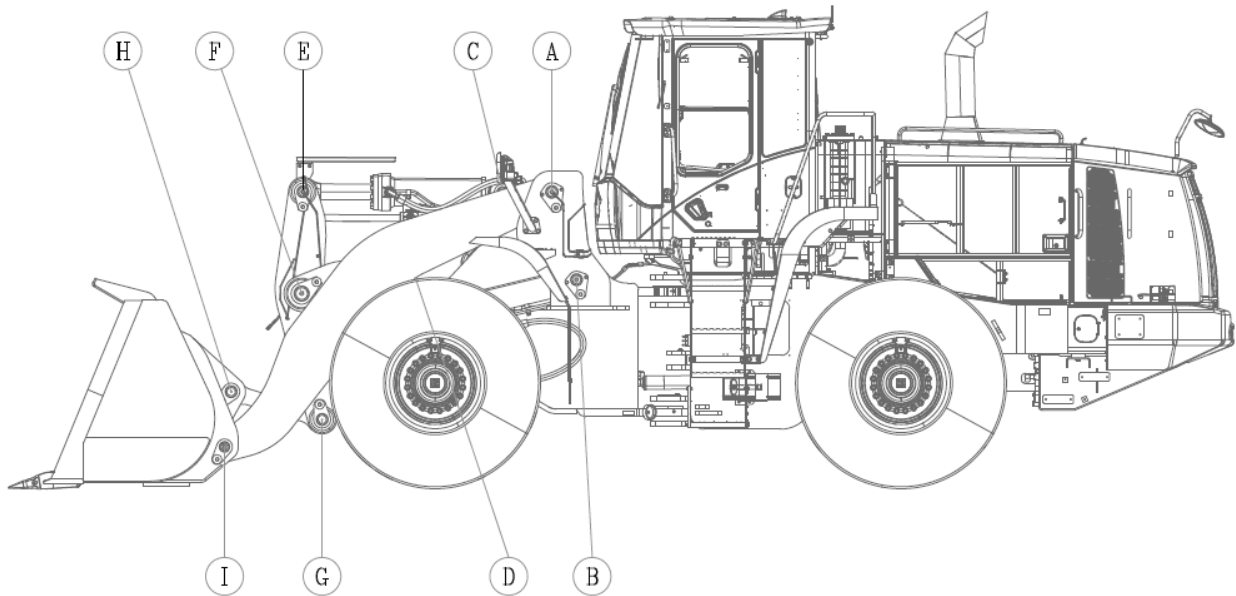
MODEL

DL420A

13/22

6. FRONT

6.1) FRONT LINKAGE PIN SIZES



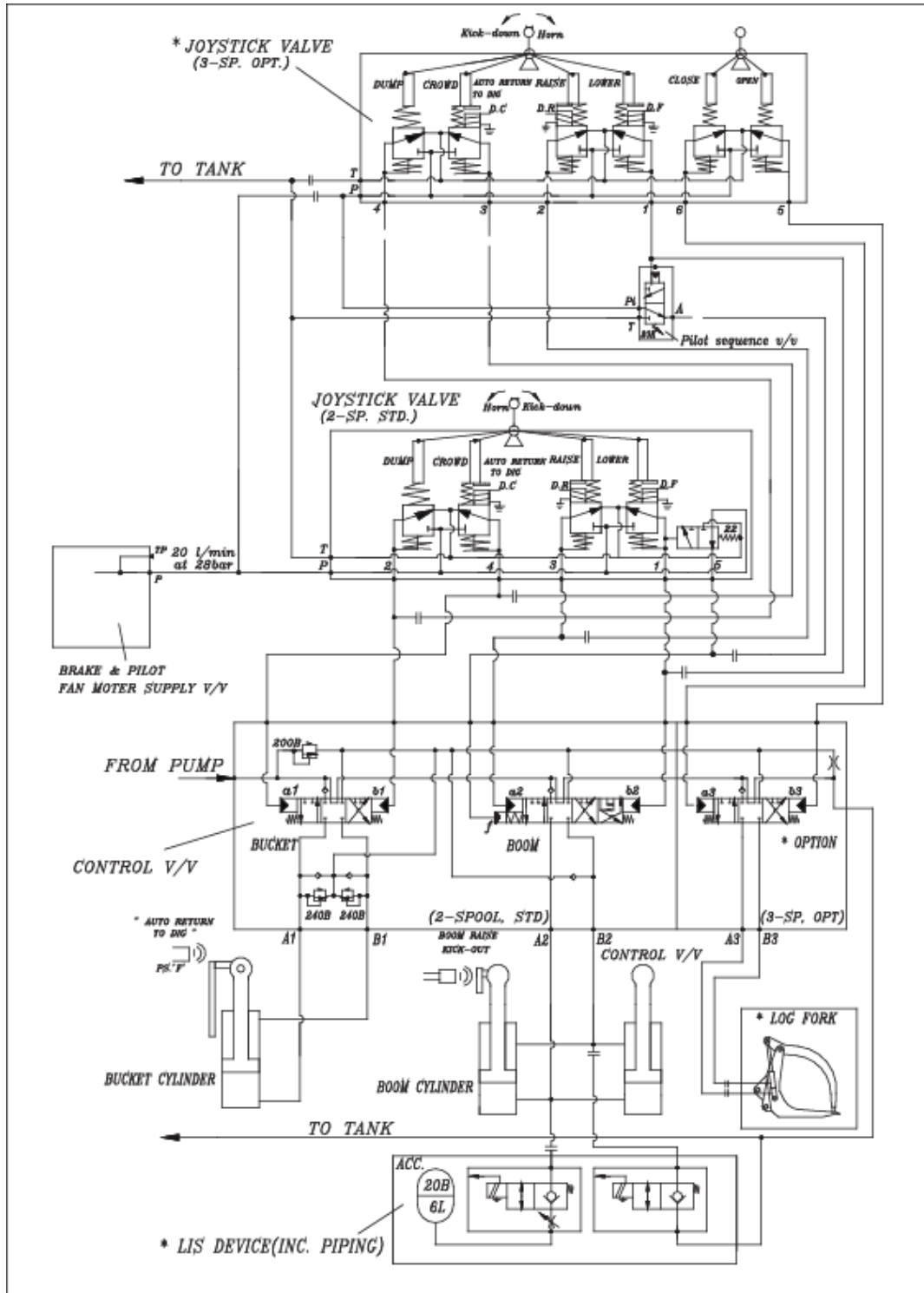
POINT	DIA. (mm)	LENGTH (mm)
A	90	337
B	90	337
C	100	353
D	90	212
E	100	306
F	125	570
G	100	306
H	100	307
I	90	291

MODEL

DL420A

14/22

6.2) OPTION PIPING

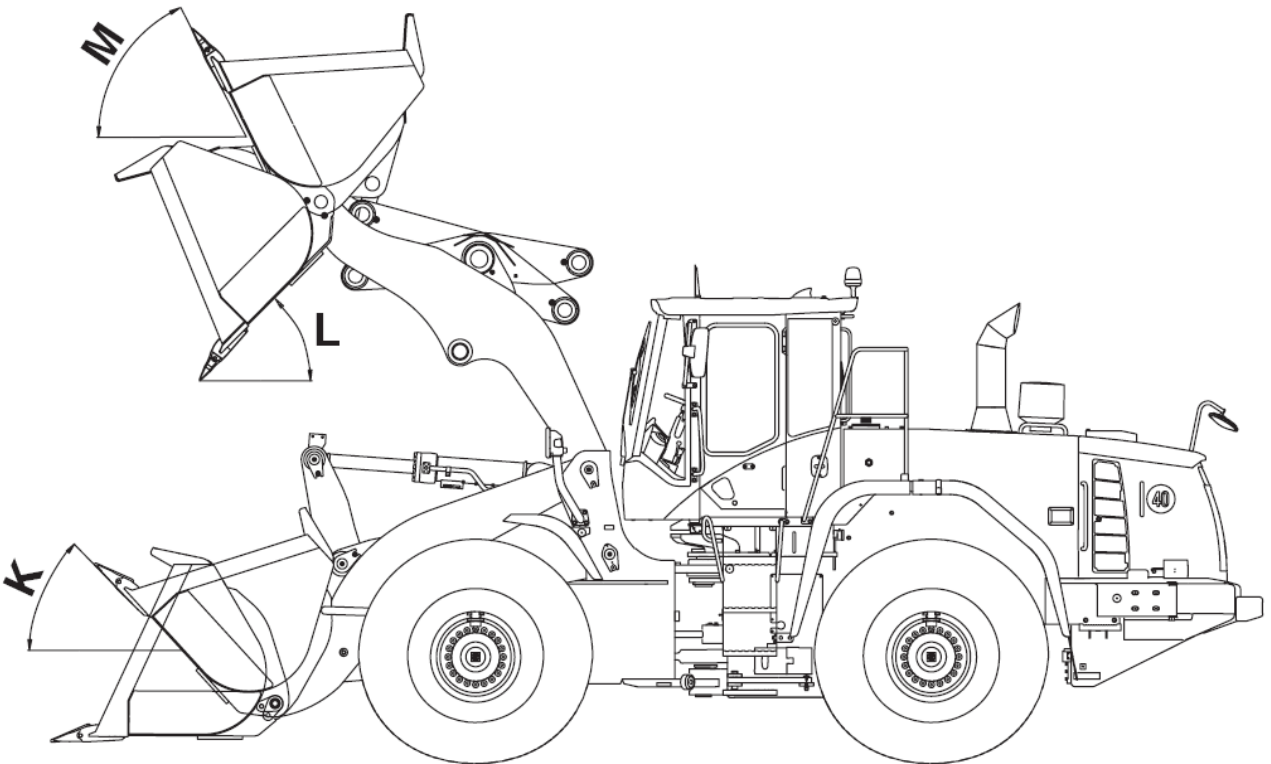
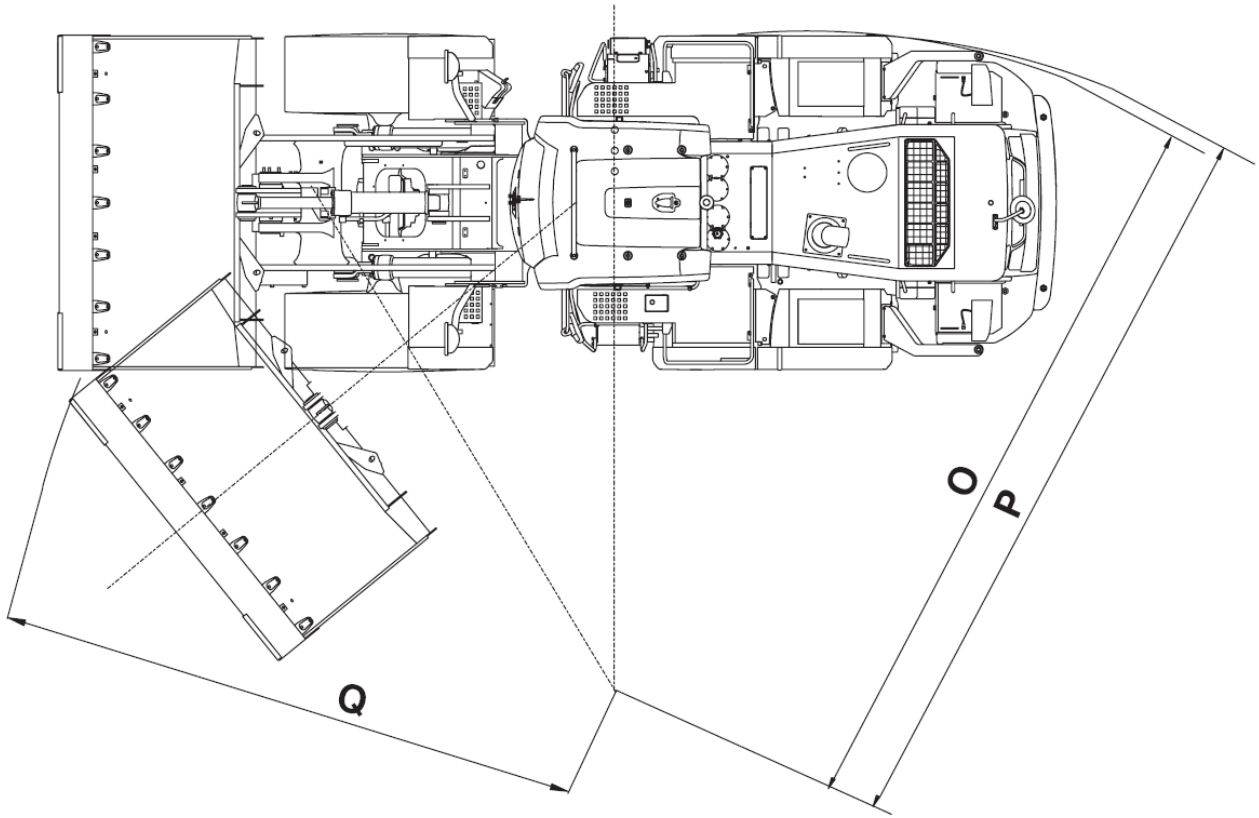


MODEL

DL420A

15/22

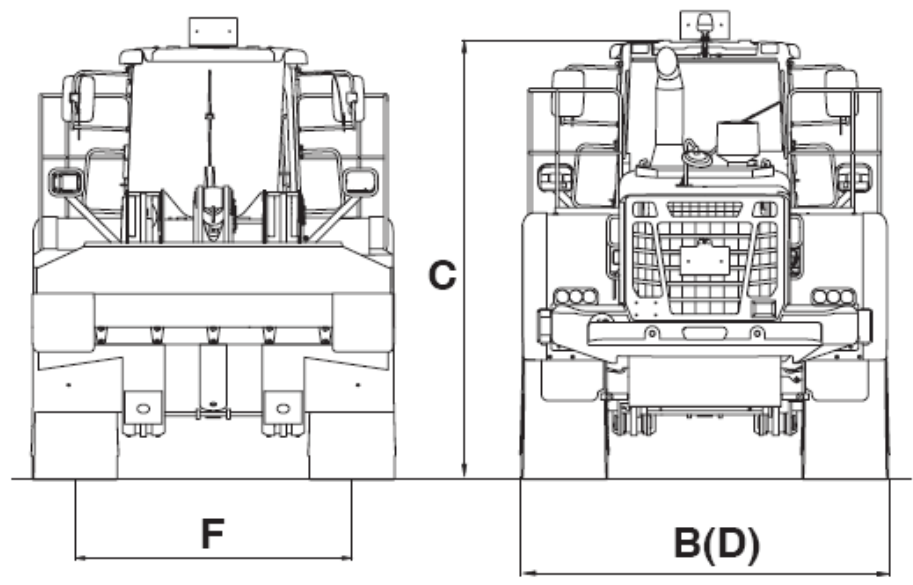
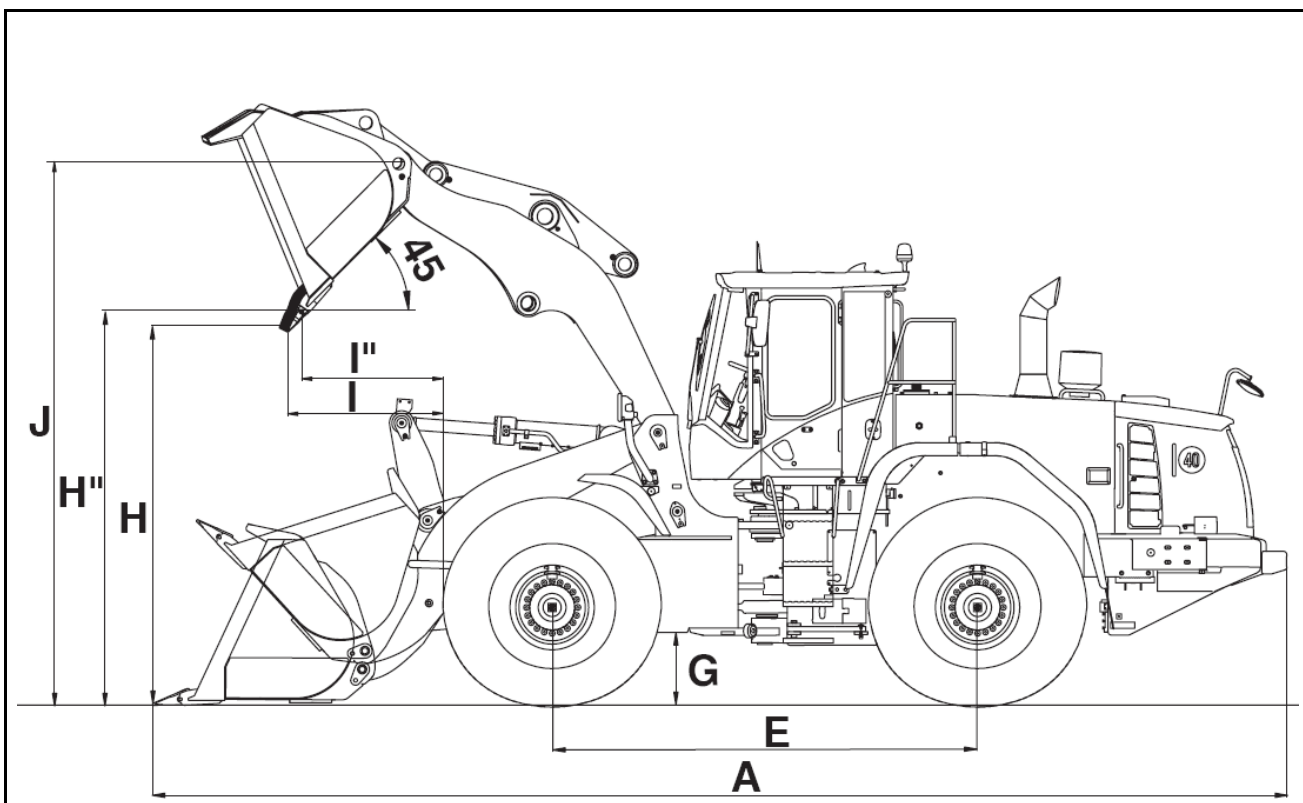
7. DIMENSIONS AND WORKING RANGE



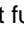
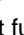
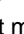
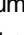
MODEL

DL420A

16/22

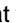
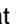

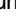


MODEL	DL420A		17/22
-------	--------	--	-------

Loader type			General purpose					
Bucket mount			PIN ON	PIN ON	PIN ON	PIN ON	PIN ON	PIN ON
Configuration	Code	Unit	Teeth	Teeth	Teeth	Bolt-on edge	Bolt-on edge	Bolt-on edge
Capacity heaped ISO/SAE		<i>m³</i>	3.7	3.9	4.0	3.9	4.1	4.2
Tooth type		-	Adapter tooth	Adapter tooth	Adapter tooth	-	-	-
Bucket width	B	<i>mm</i>	3,040	3,200	3,270	3,040	3,200	3,270
Breakout force		<i>kN</i>	198	197	197	197	196	196
Static tipping load (straight)		<i>kg</i>	18,030	17,840	17,820	17,830	17,670	17,635
Static tipping load (at full turn)		<i>kg</i>	15,250	15,490	15,070	15,075	14,935	14,905
Dump height (at 45°) (at fully raised) 	H	<i>mm</i>	2,960	2,960	2,960	3,085	3,085	3,085
Dump reach (at 45°) (at fully raised) 	I	<i>mm</i>	1,425	1,425	1,425	1,285	1,285	1,285
Dump height (at max. dump) (at max. reach) 		<i>mm</i>	680	680	680	856	856	856
Dump reach (at max. dump) (at max. reach) 		<i>mm</i>	1,460	1,460	1,460	1,395	1,395	1,395
Digging depth		<i>mm</i>	105	105	105	105	105	105
Height at bucket pivot point	J	<i>mm</i>	4,295	4,295	4,295	4,295	4,295	4,295
Max. tilt angle at carry position		<i>deg</i>	47	47	47	47	47	47
Max. tilt angle at fully raised	M	<i>deg</i>	55	55	55	55	55	55
Max. tilt angle on ground	K	<i>deg</i>	43	43	43	43	43	43
Max. tilt angle at max. reach		<i>deg</i>	54	54	54	54	54	54
Max. dump angle at max. reach		<i>deg</i>	73	73	73	73	73	73
Max. dump angle on ground		<i>deg</i>	68	68	68	68	68	68
Max. dump angle at fully raised	L	<i>deg</i>	45	45	45	45	45	45
External radius at tire side	O	<i>mm</i>	6,380	6,380	6,380	6,380	6,380	6,380
External radius at bucket edge	Q	<i>mm</i>	6,970	6,860	6,970	6,955	6,845	6,955
Wheel base	E	<i>mm</i>	3,500	3,500	3,500	3,500	3,500	3,500
Width at tyres		<i>mm</i>	2,975	2,975	2,975	2,975	2,975	2,975
Tread	F	<i>mm</i>	2,300	2,300	2,300	2,300	2,300	2,300
Ground clearance	G	<i>mm</i>	510	510	510	510	510	510
Overall length	A	<i>mm</i>	8,890	8,890	8,890	8,700	8,700	8,700
Operating weight		<i>kg</i>	21,785	21,955	21,980	21,900	22,060	22,095

 1) Measured to the tip of the bucket teeth or bolt-on edge, with tires 26.5x25-20PR.

MODEL	DL420A	18/22
-------	--------	-------

Loader type		General purpose		Rock	Light material			HIGH LIFT
Bucket mount		PIN ON	PIN ON	PIN ON	PIN ON	PIN ON	PIN ON	PIN ON
Configuration	Unit	Teeth	Teeth & segments	Teeth	Teeth	Bolt-on edge	Teeth	Teeth
Capacity heaped ISO/SAE	<i>m³</i>	3.9	4.1	3.5	4.3	4.5	4.5	3.9
Tooth type	-	<i>Mono tooth</i>	<i>Adapter tooth</i>	<i>Adapter tooth</i>	<i>Adapter tooth</i>	-	<i>Mono tooth</i>	<i>Mono tooth</i>
Bucket width	<i>mm</i>	3,200	3,200	3,230	3,200	3,200	3,354	3,200
Breakout force	<i>kN</i>	197	195	196	183	181	170	189
Static tipping load (straight)	<i>kg</i>	17,900	17,635	17,600	17,620	17,420	17,125	15,000
Static tipping load (at full turn)	<i>kg</i>	15,135	14,905	14,875	14,895	14,720	14,460	13,245
Dump height (at 45°) (at fully raised) 	<i>mm</i>	2,985	2,960	2,985	2,985	3,025	2,855	3,500
Dump reach (at 45°) (at fully raised) 	<i>mm</i>	1,395	1,425	1,395	1,480	1,350	1,535	1,505
Dump height (at max. dump) (at max. reach) 	<i>mm</i>	717	680	717	596	770	545	795
Dump reach (at max. dump) (at max. reach) 	<i>mm</i>	1,465	1,460	1,465	1,480	1,425	1,520	2,170
Digging depth	<i>mm</i>	105	105	105	105	105	105	85
Height at bucket pivot point	<i>mm</i>	4,295	4,295	4,295	4,295	4,295	4,295	4,810
Max. tilt angle at carry position	<i>deg</i>	47	47	47	47	47	47	50
Max. tilt angle at fully raised	<i>deg</i>	55	55	55	55	55	55	60
Max. tilt angle on ground	<i>deg</i>	43	43	43	43	43	43	44
Max. tilt angle at max. reach	<i>deg</i>	54	54	54	54	54	54	57
Max. dump angle at max. reach	<i>deg</i>	73	73	73	73	73	73	60
Max. dump angle on ground	<i>deg</i>	68	68	68	68	68	68	64
Max. dump angle at fully raised	<i>deg</i>	45	45	45	45	45	45	47
External radius at tire side	<i>mm</i>	6,380	6,380	6,380	6,380	6,380	6,380	6,380
External radius at bucket edge	<i>mm</i>	6,875	6,930	6,875	7,055	7,035	7,035	7,195
Wheel base	<i>mm</i>	3,500	3,500	3,500	3,500	3,500	3,500	3,500
Width at tire	<i>mm</i>	2,975	2,975	2,975	2,975	2,975	2,975	2,975
Tread	<i>mm</i>	2,300	2,300	2,300	2,300	2,300	2,300	2,300
Ground clearance	<i>mm</i>	510	510	510	510	510	510	510
Overall length	<i>mm</i>	8,850	8,890	8,850	8,975	8,790	9,030	9,464
Operating weight	<i>kg</i>	21,915	22,140	22,210	22,040	22,150	22,170	22,300

 1) Measured to the tip of the bucket teeth or bolt-on edge, with tires 26.5x25-20PR.

MODEL	DL420A		19/22
-------	--------	--	-------

8. PERFORMANCE DATA

8.1) PRESSURE SETS

WORKING	200 ± 10 bar
STEERING RELIEF (LS PORT SIDE)	185 ± 5 bar
(STEER PUMP SIDE)	210 ± 5 bar
PILOT CONTROL	28 + 2 bar
BRAKE ACCUMULATOR CHARGING	120 bar
SERVICE BRAKE	80 ± 3 bar
FAN MOTOR MAX.	182 bar
PARKING BRAKE RELEASE	120 ± 5 bar
T/M SELECTION PRESSURE	16~18 ± 1 bar

8.2) SPEED & FORCE

OPERATION		UNIT	SPEED-FORCE	REMARKS
ARM	UP	sec	6.0 ± 0.5	
	DOWN	sec	4.2 ± 0.4	
BUCKET	CROWD	sec	1.8 ± 0.3	Max. Height
	DUMP	sec	1.3 ± 0.3	
STEERING	LOCK TO LOCK	TURN	3.6	
E/G RPM	HIGH	RPM	2,300 ± 50	(On machine)
	LOW	RPM	975 ± 25	(On machine)
E/G RPM	HYDRAULIC STALL	RPM	2,250	
	CONVERTER STALL	RPM	2,100	
	T/C + HYD. STALL	RPM	1,850	
COOLING FAN	E/G HIGH	RPM	1,600	
TRAVEL SPEED (1/2/3/4)		km/h	8.3/13.6/29/40	
BRAKING DISTANCE		m	13.8 m at 40 KPH	
MAX. TRACTIVE EFFORT		ton	21.5	
BREAKOUT FORCE (BOT 3.9)		kN	197	
PAYLOAD		ton	7.02	
STATIC TIPPING LOAD (straight)		kg	17,840	BOT 3.9
STATIC TIPPING LOAD (full turn)		kg	15,490	BOT 3.9
RATED OPERATION LOAD		kg	7,745	BOT 3.9

MODEL

DL420A

20/22

9. NOISE LEVEL

SURFACE SOUND POWER LEVEL (L _{WA})	112 dB(A) (ISO 6395)
OPERATOR'S CABIN NOISE LEVEL (L _{PA})	74 dB(A) (ISO 6396)

10. USER SERVICE DATA

COMPARTMENT/ GREASE JOINT		No, OF C/G	REFILL CAPACITY	FLUID OR LUBRICANT	SERVICE INTERVAL (hr)	
					LUBE	FILTER
COOLING SYSTEM		1	50 ℓ	WATER	1,000	-
FUEL TANK		1	348 ℓ	DIESEL	-	500
HYD. SYSTEM		1	265 ℓ	ISO #46	2,000	500
ENGINE CRANKCASE		2	25 ℓ	E/G OIL	250	250
AXLE	FRONT	1	45 ℓ	GEAR OIL	1,500	-
	REAR	1	42 ℓ	GEAR OIL	1,500	-
T/C AND T/M		1	54 ℓ	SAE 15W40	1,000	1000
FRONT PROPELLER SHAFT		1	-	GREASE	250	-
FRONT PIN		13	-	GREASE	50	-
ARTICULATION JOINT		2	-	GREASE	50	-
REAR AXLE PIVOT		2	-	GREASE	50	-
STEER CYLINDER		4	-	GREASE	50	-

MODEL

DL420A

21/22

11. SUB GROUP WEIGHTS

ITEM	UNIT	WEIGHT	REMARKS
COUNTERWEIGHT	<i>kg</i>	1,273	
FRONT FRAME	<i>kg</i>	2,204	
REAR FRAME	<i>kg</i>	2,014	
OIL TANK	<i>kg</i>	171	<i>w/o Oil</i>
FUEL TANK	<i>kg</i>	300	<i>w/o Oil</i>
ENGINE	<i>kg</i>	984	<i>w/Cac pipe& Oil</i>
TRANSMISSION	<i>kg</i>	815	<i>w/o Oil, w/o Lock-up</i>
AXLE_FRONT	<i>kg</i>	1,136	<i>w/ Oil</i>
AXLE_REAR	<i>kg</i>	1094	<i>w/ Oil</i>
TIRE(26.5x25-20PR) at Each Tire	<i>kg</i>	379	<i>Domestic tire</i>
RIM at Each Rim	<i>kg</i>	240	
PROPELLER SHAFTS (F/C/R)	<i>kg</i>	52 + 74 + 18	
RADIATOR	<i>kg</i>	248	<i>w/o Water</i>
MAIN PUMP	<i>kg</i>	27.2	
AXLE PIVOT SUPPORT_FRONT	<i>kg</i>	122	
AXLE PIVOT SUPPORT_REAR	<i>kg</i>	241	
CABIN ASS'Y (ROPS)	<i>kg</i>	896	
LOADER ARM ASS'Y	<i>kg</i>	1,419	
TILT LEVER ASS'Y	<i>kg</i>	425	
3.9 m ³ BUCKET ASS'Y (w/ Tooth)	<i>kg</i>	2,046	
LINK	<i>kg</i>	62	
CYLINDER_ARM at Each CYLINDER	<i>kg</i>	219	
CYLINDER_BUCKET	<i>kg</i>	234	

12. LIFTING CAPACITY

BUCKET	UNIT	3.9 BOT	4.1 BOC
Lifting Capacity to Max.Height	<i>kgf</i>	11,308 kgf	11,224 kgf

MODEL

DL420A

22/22